

CERTIFICATE OF LOCATION OF GOVERNMENT CORNER

East Quarter Corner of Section 23, Township 107 N, Range 43W, 5th P.M.
 STATE OF MINNESOTA, County of Murray

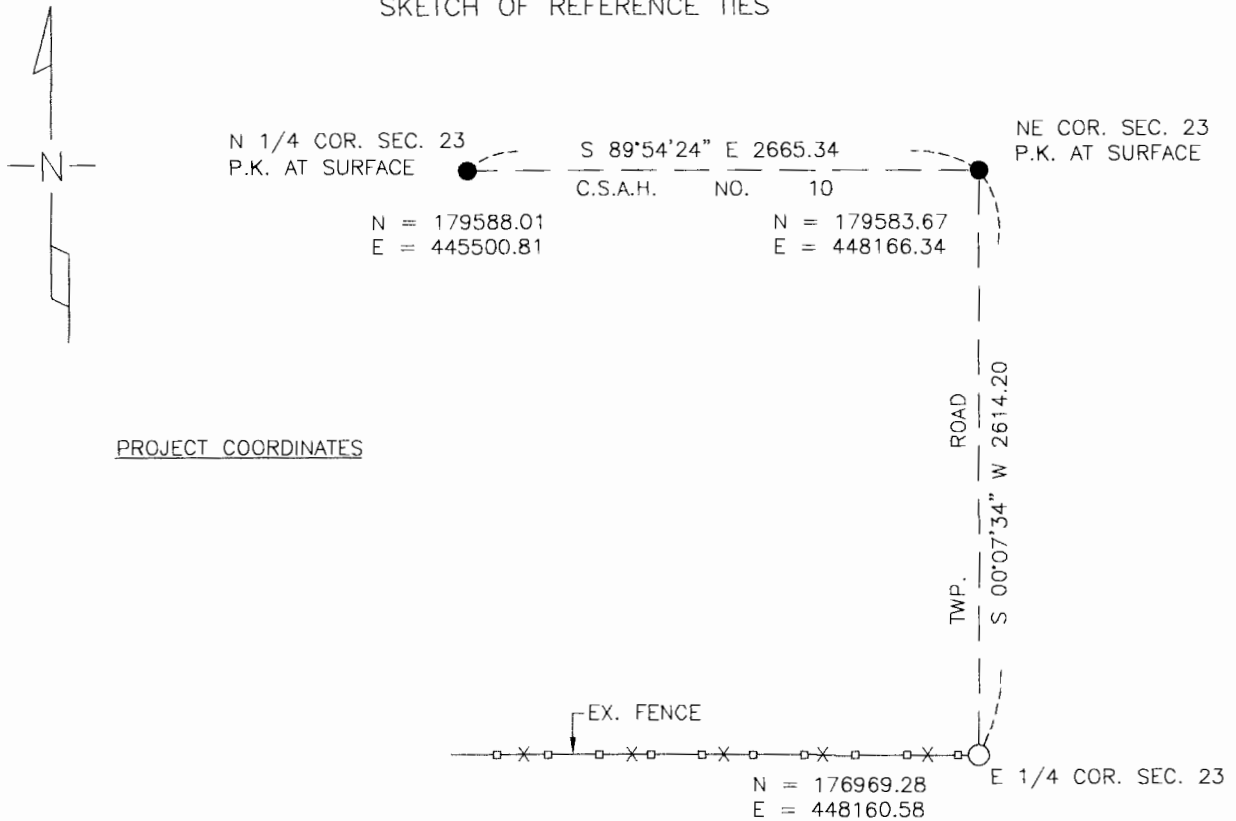
At the corner location shown on the sketch

On 8/11/05 found a 6" X 10" Stone 2.3' below surface with wooden hub on east side
stone @ Twp. Rd. in line with fence to west

left monument as found lowered monument, removed monument (explain)

On 8/16/05 placed a 1" Iron Pipe with survey cap 23008 over top center of stone.

SKETCH OF REFERENCE TIES



Statement of evidence relative to this corner location is on back of page.

I hereby certify that this document and the data contained herein was prepared by me or under my direct supervision.

Perry L. Zierke 8-18-05
 SIGNATURE DATE

MN. REGISTRATION NO. 23008

Land Surveyor, Professional Engineer

County Surveyor, County Engineer

OFFICE OF THE COUNTY RECORDER

I hereby certify that this document was filed in the Co. Recorder's Office at _____ on the _____ day of **AUG 19 2005**

County Recorder James V. Johnson
 By _____, Deputy

DOCUMENT NO. _____